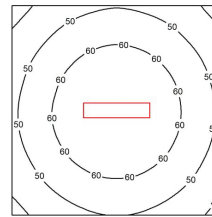


## LNS SERIES (LITE)



LNS22 (2x10W) model:  
Average Lux : 55lx  
Mounting Height : 2.3 Meters  
Measurement Area : 2m²



\*For AC models only



### Key Features

- Triac dimming compatible
- Special designed polycarbonate diffuser to optimize the LED lighting performance
- Long service life of 50,000 hours L70 @ 45°C (Ta)
- Safety, EMC and IEC compliance
- Available with emergency lighting

### Application

Passageways, Cabins, Lounges, Dining rooms, Accommodation areas

### Mounting Method

4 mounting holes ø5mm

### Material

Diffuser: Polycarbonate  
Housing: Marine grade Aluminium AL6063

### Electrical

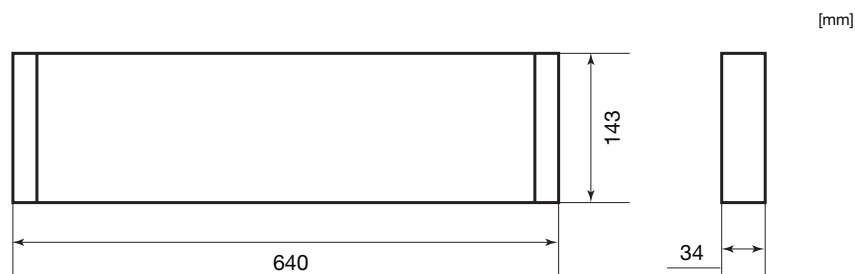
Flexible wiring, Heat resistant up to 105°C

### Options

100V ~ 120V AC  
220V ~ 240V AC  
24V DC

### Weight

LNS22: 0.9Kg



## TECHNICAL SPECIFICATIONS



Ideal Replacement:



### 100V - 120V AC

- S Denotes : Standard lighting
- E Denotes : With DC24V emergency LED

BH Code	Part No.	Main Voltage	Power	CCT	Ambient Temp (Ta)	System Lumen
LNS22AXA13KS	LNS22	100V - 120V AC	2x10W	2700K	-30°C ~ +45°C	1700lm
LNS22AXA13KE	LNS22	100V - 120V AC	2x10W	2700K	-30°C ~ +45°C	1700lm
LNS22AXA14KS	LNS22	100V - 120V AC	2x10W	4000K	-30°C ~ +45°C	1700lm
LNS22AXA14KE	LNS22	100V - 120V AC	2x10W	4000K	-30°C ~ +45°C	1700lm
LNS22AXA16KS	LNS22	100V - 120V AC	2x10W	6500K	-30°C ~ +45°C	1700lm
LNS22AXA16KE	LNS22	100V - 120V AC	2x10W	6500K	-30°C ~ +45°C	1700lm

\*Ambient Temperature is not applicable for Emergency Lighting.

## LNS SERIES (LITE)

### TECHNICAL SPECIFICATIONS

IP 20

Ideal Replacement:

 LNS22 for 2X18W

### 220V - 240V AC

- S Denotes : Standard lighting
- E Denotes : With DC24V emergency LED

BH Code	Part No.	Main Voltage	Power	CCT	Ambient Temp (Ta)	System Lumen
LNS22AXA23KS	LNS22	220V - 240V AC	2x10W	2700K	-30°C ~ +45°C	1700lm
LNS22AXA23KE	LNS22	220V - 240V AC	2x10W	2700K	-30°C ~ +45°C	1700lm
LNS22AXA24KS	LNS22	220V - 240V AC	2x10W	4000K	-30°C ~ +45°C	1700lm
LNS22AXA24KE	LNS22	220V - 240V AC	2x10W	4000K	-30°C ~ +45°C	1700lm
LNS22AXA26KS	LNS22	220V - 240V AC	2x10W	6500K	-30°C ~ +45°C	1700lm
LNS22AXA26KE	LNS22	220V - 240V AC	2x10W	6500K	-30°C ~ +45°C	1700lm

\*Ambient Temperature is not applicable for Emergency Lighting.

### 24V DC

- S Denotes : Standard lighting

BH Code	Part No.	Main Voltage	Power	CCT	Ambient Temp (Ta)	System Lumen
LNS22AXD25KS	LNS22	24V DC	2x10W	5000K	-30°C ~ +45°C	1700lm