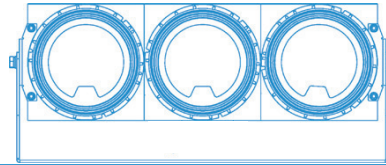


MODULAR LED FLOODLIGHT



LF60 3 SERIES



Wide beam model



Narrow beam model

Key Features

- Triac dimming compatible (**220V-240VAC & 100V-120VAC only**)
- Designed with reliable AC driver on board to enhance the service life
- Rapid heat-dissipating design to prolong lamp life and optimise lumen output
- Long service life of 100,000 hours @ 50°C (Ta)
- Compact and lightweight design
- Interchangeable module
- Safety, EMC and IEC compliance



Application

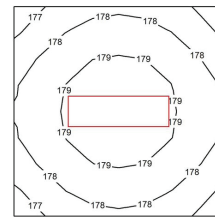
Decks, Marinas, Docks, Ports, Warehouses

Material

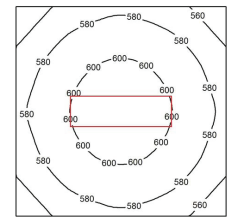
Marine grade aluminium alloy with powder coating, comes with 4mm tempered glass front cover

Weight

5.7Kg

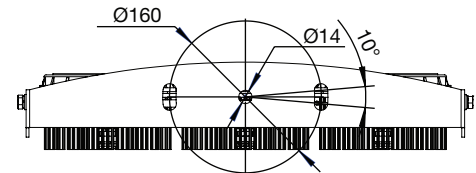
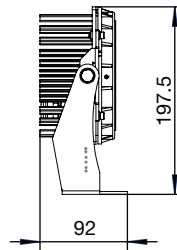
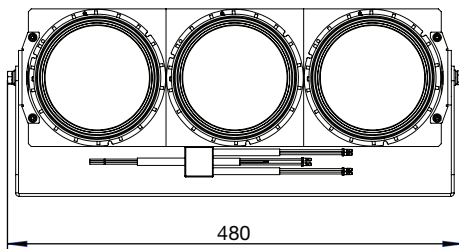


Wide beam model:
Average Lux : 177lx
Mounting Height : 5 Meters
Measurement Area : 1m²



Narrow beam model:
Average Lux : 584lx
Mounting Height : 5 Meters
Measurement Area : 1m²

[mm]



TECHNICAL SPECIFICATIONS IP 66

Ideal Replacement: 250W
HPS 400W
MH 1500W
HALOGEN

BH Code	Type	Main Voltage	Power	CCT	Beam Angle	Ambient Temp (Ta)	System Lumen
LF60F035KA22	LF60-3F	220V - 240V AC	168W	5000K	115°	-40°C ~ +50°C	16500lm
LF60N035KA22	LF60-3N	220V - 240V AC	168W	5000K	45°	-40°C ~ +50°C	16200lm
LF60F035KA11	LF60-3F	100V - 120V AC	168W	5000K	105°	-40°C ~ +50°C	13500lm
LF60N035KA11	LF60-3N	100V - 120V AC	168W	5000K	45°	-40°C ~ +50°C	13500lm
LF60F035KD24	LF60-3F	24V DC	168W	5000K	130°	-40°C ~ +50°C	14700lm
LF60N035KD24	LF60-3N	24V DC	168W	5000K	35°	-40°C ~ +50°C	13800lm

Also available in other CCT and beam angle upon request.

Due to our continuous development and product improvement policy, we reserve the rights to revise the specifications of all products without prior notice.

