

# LED WALL LIGHT



## LGW SERIES



### Key Features

- Complete solution with heat sink, driver and polycarbonate diffuser
- Vibration-resistant
- Alternative to 300W incandescent bulb
- Energy savings of up to 90% compared to 300W incandescent bulb
- Long service life of 30,000 hours L70 @ 45°C (Ta)
- Safety, EMC and IEC compliance

### Application

Engine rooms, Low visibility areas, Decks, Warehouses, Yards

### Material

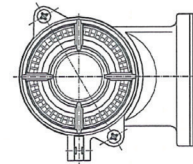
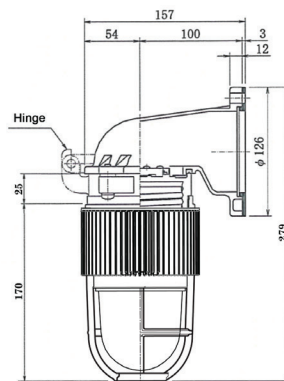
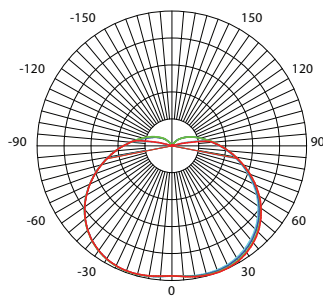
Marine grade aluminium alloy with powder coating and PBT fiberglass reinforced body, polycarbonate diffuser and guard

### Options

Polycarbonate clear guard (PC)  
Polycarbonate red guard (PR)

### Weight

1.5Kg



[mm]

## TECHNICAL SPECIFICATIONS IP 56

- PC Denotes : Polycarbonate clear guard
- PR Denotes : Polycarbonate red guard

Ideal Replacement:



BH Code	Type	Main Voltage	Power	CCT	Beam Angle	Ambient Temp (Ta)	System Lumen
LGW30AD25KPC	LGW-30	100V - 240V AC/DC	30W	5000K	180°	-40°C ~ +45°C	2900lm
LGW30AD25KPR	LGW-30	100V - 240V AC/DC	30W	5000K	180°	-40°C ~ +45°C	2900lm

Also available in other CCT.

Due to our continuous development and product improvement policy, we reserve the rights to revise the specifications of all products without prior notice.

